

① SKIP SIGNAL

OPERATING MODE: NC(NORMALLY CLOSE)

REPEATABILITY :0.001mm

RECOMMENDED SPEED: 50~200mm/min

RATING :DC24V 20mA(Max)

(RECOMMENDED VALUE 10mA)NON-INDUCTIVE LOAD

② OVER TRAVEL SIGNAL

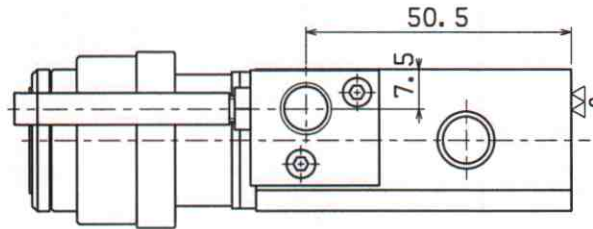
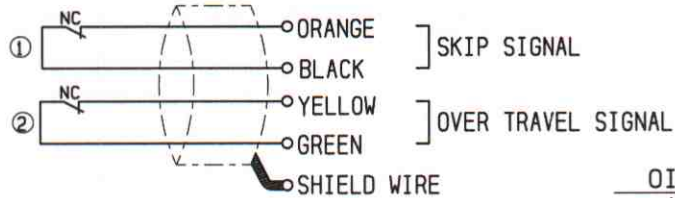
MICRO SWITCH

RATING :DC24V 100mA(NON-INDUCTIVE LOAD)

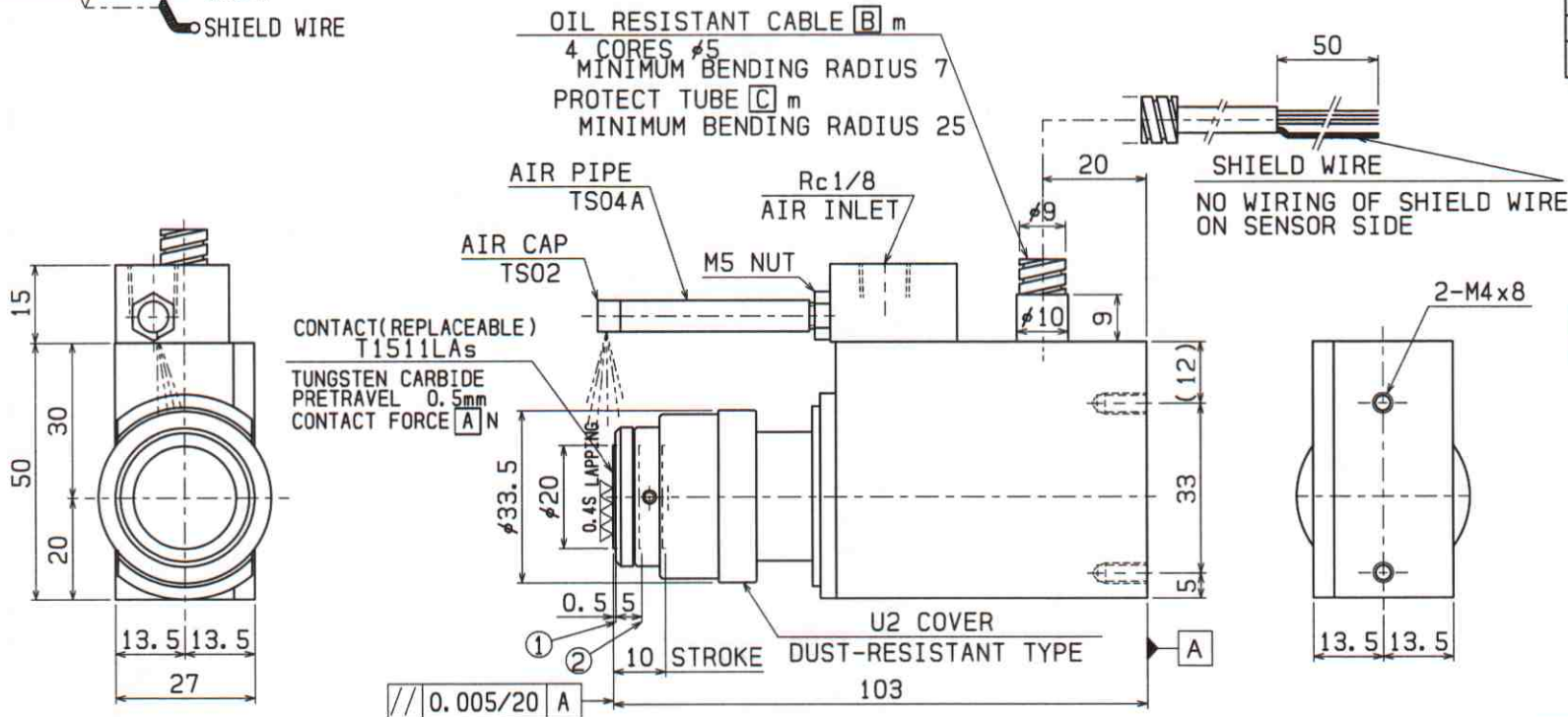
OPERATING MODE: NC(NORMALLY CLOSE)

DEGREE OF PROTECTION :IEC IP67

PRODUCT NUMBER	CONTACT FORCE(N)			CABLE LENGTH(m)		
	A	B	C	CABLE	PROTECT TUBE	
T2002-01-02	2.5	1.2	0.7			
T2002-01-03	1.5	1.2	0.7			
T2002-01-04	2.5	2	1.5			
T2002-01-05	1.5	2	1.5			
T2002-01-06	2.5	1.2	0.8			
T2002-01-07	1.5	1	0.6			
T2002-01-08	1.5	6.5	-			
T2002-01-09	2.5	1	0.6			
T2002-01-10	2.5	6.5	-			



[PARTS LIST]	
NAME	PART NUMBER
CONTACT	T1511LA _S



FOR VERTICAL MOUNTING

ASBESTOS IS NOT USED FOR THIS PRODUCT

CHK	DRA	A3
<i>Hanno</i>	12.06.08 SHIBATA	1:1

SERIES OF T2002-01	
NAME	TOOLSETTER
DRAWING NUMBER	T2002-01-□□
METROL	