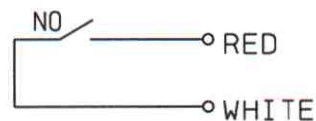
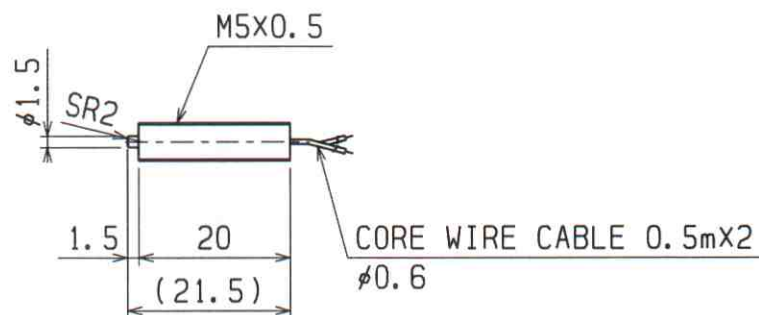
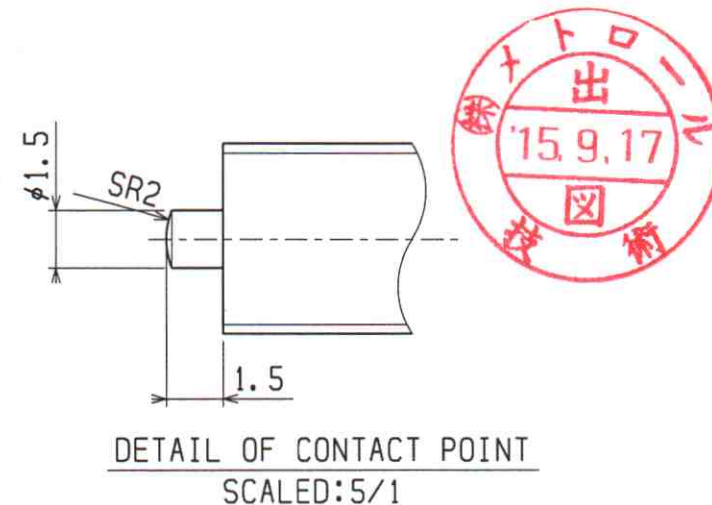


OPERATING MODE : NO(NORMALLY OPEN)
 REPEATABILITY : 0.001mm
 (OPERATING SPEED 50~200mm/min)
 RATING : DC24V
 (Max. 10mA) STATIONARY CURRENT
 (Max. 20mA) INRUSH CURRENT
 BEARING STRUCTURE: METAL BEARING
 (FOR STRAIGHT TOUCH OR WITHIN DEFLECTION ANGLE $\pm 3^\circ$)
 CONTACT MATERIAL : SUS HRC45
 CASE MATERIAL : SUS303
 PRETRAVEL : 0.3mm
 STROKE : 1.5mm
 CONTACT FORCE : 0.5N

DEGREE OF PROTECTION: IEC IP40



ACCESSORY
 ・HEXAGONAL NUT S629 2EA
 M5x0.5(e:7.7/s:7/m:2.4)

CHK	DRA	A4	NAME	PT-TOUCH SWITCH
Kanno	15.04.30 SUSAKI	1:1	DRAWING NUMBER	PT5M1WA
			METROL LTD.	METROL