

■ End locators for CNC cylindrical grinders are used for measurement of workpiece end surfaces.

Standard Specifications

unit:mm

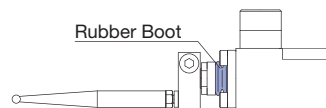
Product name	<b>E2A</b>
Contact structure	NC (Normally closed)
Output mode	NC (Normally closed)/NO (Normally open)
Pretravel*	Less than 0.5
Stroke	±7 (Approx. 5°)
Repeatability	0.002 (Recommended operating speed of 50 - 200mm/min)
Contact life time	3 million
Protective structure	IP67
Contact force	1.2N
Contact material	Tungsten carbide ball
Contact rating	DC5V - DC24V 10mA (Max20mA) resistance load
Cable	Oil resistant $\phi 5$ / 4 cores Tensile strength 30N, Minimum bending R7
LED lamp	Default : LED ON / Operating : LED OFF
Standard accessory	External I/F unit <b>CL-1F</b> (Refer to P4-4)

Over travel signal

Output mode	B : NC (Normally closed)
Contact rating	DC24V 20mA(Max)

Precautions

· If grinding powder accumulates on the rubber boot, please rinse with coolant or clean it.



· Rubber materials used in some products are applicable to water-soluble coolants and alkaline liquids. (Refer to P5-4)

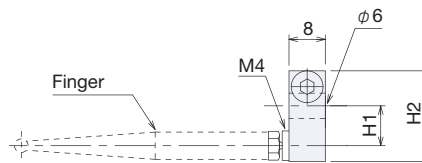
- Precautions for Touch Probe ..... P2-3
- Precautions for sensor connecting ..... P5-1
- Cable options ..... P5-2
- Technical guide ..... P5-3

\*with finger length of 54.5mm (1025D)

Options

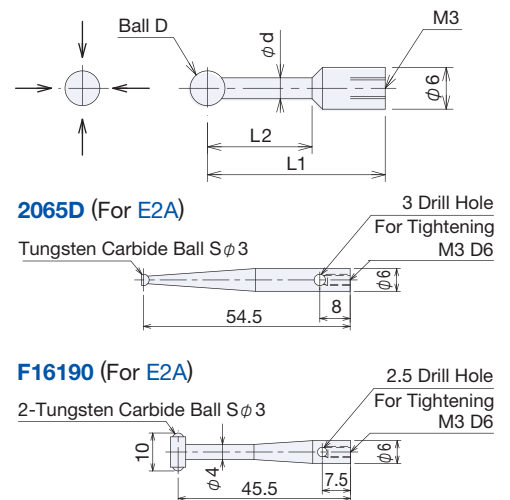
Finger Holder

Finger Holder No.					
	F01	F02	F03	F04	F05
H1	10	15	20	25	30
H2	23.5	28.5	33.5	38.5	43.5



Finger

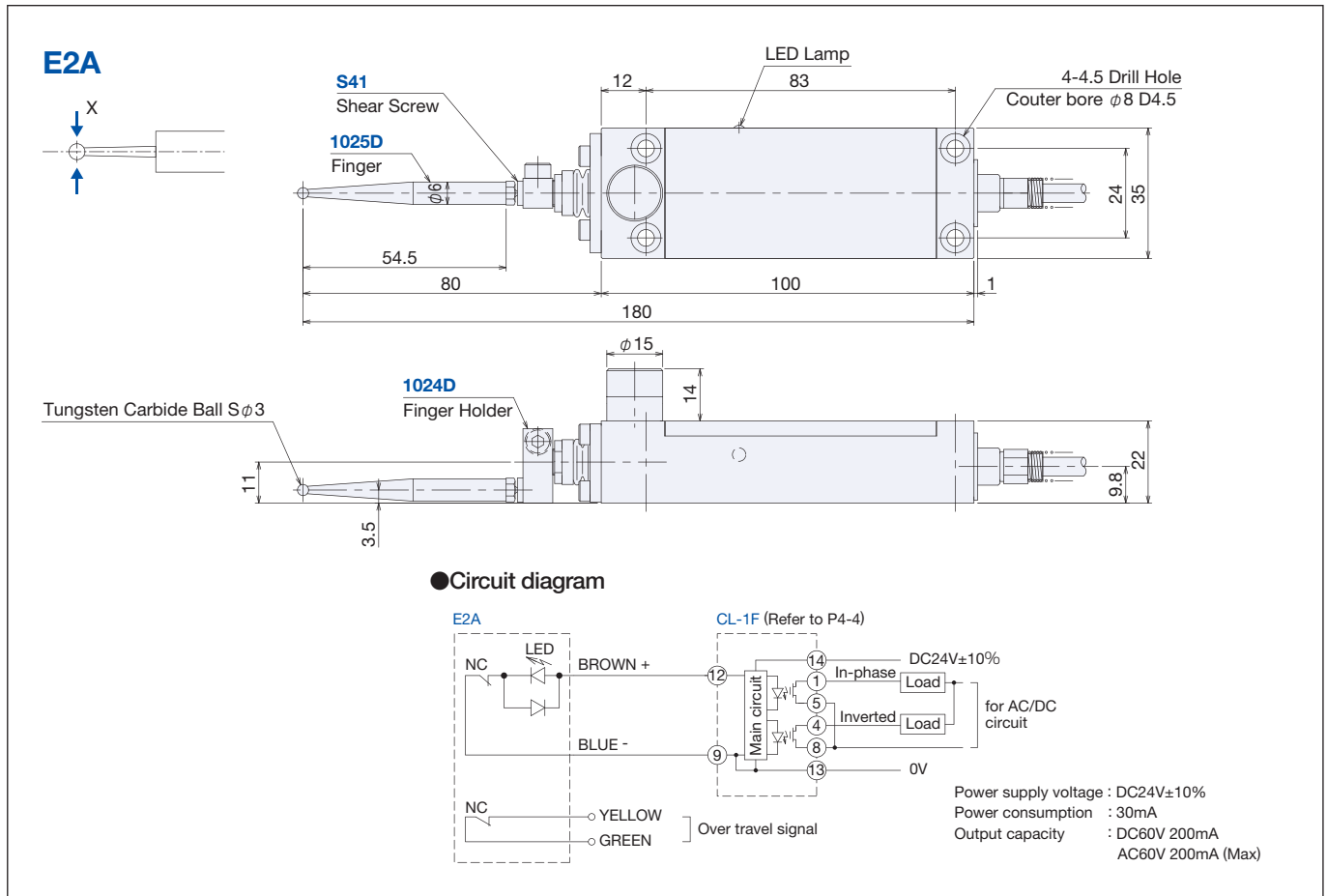
D	$\phi d$	L2	Finger No.				
5	3	within 15	F615	F625	F635	F645	F655
			L1	15.5	25.5	35.5	45.5
4	2.5	within 15	F614	F624	F634	F644	F654
			L1	15.5	25.5	35.5	45.5
3	1.8	within 8	F613	F623	F633	F643	
			L1	15.5	25.5	35.5	45.5
2	1.2	within 5	F612	F622	F632	F642	
			L1	15.5	25.5	35.5	45.5



# ±X 2-Direction

## End Locator for CNC Cylindrical Grinders

### Outer dimensions



### Specification sheet

Fax +81 42 528 1442  
E-mail : touchsensor@metrol.co.jp

▼Please send us your inquiry by fax/e-mail after copying this page, and filling in necessary information. Sample :

Optional specifications (Bold:Standard)

Date:(mm,dd,yy) \_\_\_\_\_

Finger Holder (Refer to P4-15)	_____ (standard <b>1024D</b> )
Finger (Refer to P4-15)	_____ (standard <b>1025D</b> )

Cable options (1m/unit)

Length / Protective cable	_____ m / <input type="checkbox"/> Not required	<input type="checkbox"/> Protective tube _____ m (Upper limit :15m)	<input type="checkbox"/> Wire braid _____ m (Upper limit :10m)
Connector (Refer to P5-2)	<input type="checkbox"/> Not required	<input type="checkbox"/> Connector	
Machine side cable option	Length _____ m		
from connector (if desired)	Protective cable <input type="checkbox"/> Not required	<input type="checkbox"/> Protective tube _____ m (Upper limit :15m)	<input type="checkbox"/> Wire braid _____ m (Upper limit :10m)

Company :	
Dept. / Title :	
Customer name :	
Address :	
Tel :	Fax :
E-mail :	
Other (if any) :	

### Ordering and Inquiries

**1.Customer**

Fax or E-mail

Fill out the specification sheet and send to Metrol.

**2.Metrol**

Fax or E-mail

Send the drawing(s) of specific model based on spec sheet received.

**3.Customer**

Fax or E-mail

Select/confirm the specific model by the customer.

**4.Customer /Metrol**

Fax or E-mail

Metrol sends the quote, and the customer places the order for the same.

E-mail to : [touchsensor@metrol.co.jp](mailto:touchsensor@metrol.co.jp)  
 Download PDF sheet : <http://toolsensor.com/builder.html>